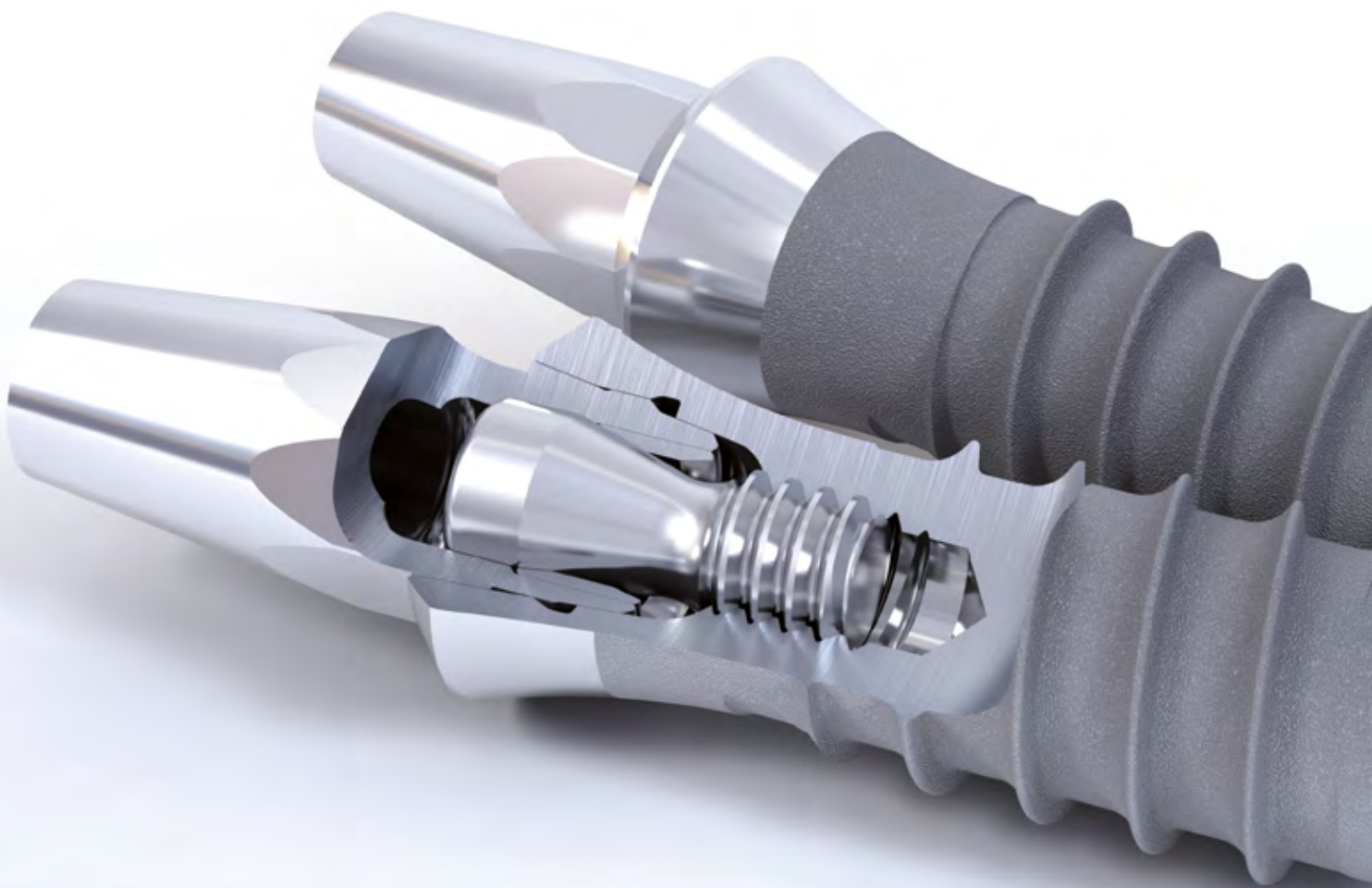




STRAUMANN®
SOFT TISSUE LEVEL SYSTEM
TIME-TESTED



COMMITTED TO
SIMPLY DOING MORE
FOR DENTAL PROFESSIONALS

SOFT TISSUE LEVEL IMPLANTS ALLOW STREAMLINED WORKFLOWS

Simplicity and efficiency by integrated soft tissue management

Straumann® Soft Tissue Level Implants have a built-in smooth neck that reaches into the soft tissue and shapes it, thus eliminating the need for healing abutments and time-consuming soft tissue management procedures. Engineered for one-stage surgery, the design is intended to make a second surgical procedure unnecessary, which would be required for accessing submerged bone level implants. Generally, the integrated soft tissue management is designed to minimize both surgical and prosthetic treatment complexity, and makes the workflow simple and efficient.



- Straumann® Soft Tissue Level Implants aim to reduce chair time and minimize treatment complexity.
- Our lean prosthetic portfolio is supported by the implant design.
- Abutment-level impressions make workflows efficient and can minimize the number of patient visits.¹
- Simple impression taking and abutment placement are the advantages of the connection at soft tissue level.
- Clear implant view and accessibility in the challenging posterior region are provided.
- Clinical evidence shows high treatment success.^{2,3}

"The Straumann® Soft Tissue Level is the simplest and most profitable implant system I restore in my practice. The ease of use makes it my favorite implant system in the posterior region. It is easier to restore than regular crowns and bridges, and the lab fee is the same."

DR. ROBERT MARGEAS, DDS, DES MOINES IA, USA



A LONG HISTORY OF RECOGNITION AND APPRECIATION

One of the most used and best-established working systems in implant dentistry

The Straumann® Soft Tissue Level System is one of the most used and best-established working systems in implant dentistry and has been available in its current design for 15 years. The implant has been complemented over time by Straumann's rewarded innovation technologies, such as the SLActive® Implant surface, designed for faster osseointegration and Roxolid®, the high-strength material for confidence in small-diameter implants.

- More than 11 million Straumann implants sold.
- More than 48 000 users.
- 10-year prospective clinical data available.^{2,3,5}

1974

Straumann develops its first one-stage implant.

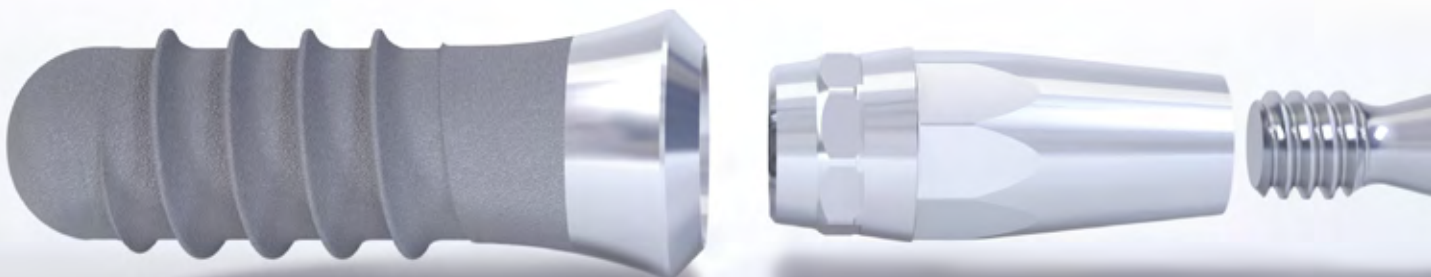
1999

Straumann® SLA® Implants for tissue level are released:

- SLA®, pioneering surface technology cut in half the timing of provisionalization versus the previous Straumann® TPS surface.^{5,6,7}
- synOcta® Morse taper connection provides a new level of flexibility in prosthetics.

2006

Introduction of SLActive®, innovative surface further reducing healing times, down to 3–4 weeks.⁸



"For us, the Soft Tissue Level Implant is the classic Straumann implant, since the histo-morphological behavior of the peri-implant tissue is similar to that around natural teeth."¹²

PROF. DR. HEINZ KNIHA AND DR. MICHAEL GAHLERT, MÜNCHEN, GERMANY

2009

Release of Straumann® Soft Tissue Level 3.3 mm Implants made of Roxolid® alloy; stronger than titanium⁹, for more confidence in small-diameter implants.

2011

Publication of the first 10-year prospective clinical data on Straumann® Soft Tissue Level System.^{2,3}

2012

Release of Straumann® Narrow Neck CrossFit® Implant Line*, Straumann's solution to address interdental space limitations.

* The product may not be available in all countries.
Please contact your local Straumann organization for more information.

PREDICTABLE LONG-TERM RESULTS

10-year prospective clinical data on the Straumann® Soft Tissue Level System in edentulous maxilla^{2,3}

Due to its long history and usage by dentists worldwide, the Straumann® Soft Tissue Level System is currently one of the most documented systems available. In 2011, 10-year follow-up prospective clinical data have been published. The studies show predictable long-term results, on implant-supported full-arch maxillary prostheses, and a high implant survival rate^{2,3}.

- Predictable long-term results supporting full-arch maxillary prostheses, 5-year data were confirmed at 10 years.
- High implant survival rate (95.1%).²
- No fracture of Straumann abutments, abutment screws or assembly during the 10 years of function.³
- Bone loss well within accepted criteria for implant success² (according to Albrektsson et al.⁹).
- No implants were lost between 5 and 10 years.²
- No signs of peri-implantitis were noted at 10 years (except in one patient with severe periodontitis²).
- High patient satisfaction.



“At the 10-year follow-up, patients said: ‘Getting this treatment has been one of my best decisions ever, and I always tell friends who miss one or several teeth to go for an implant treatment.’”

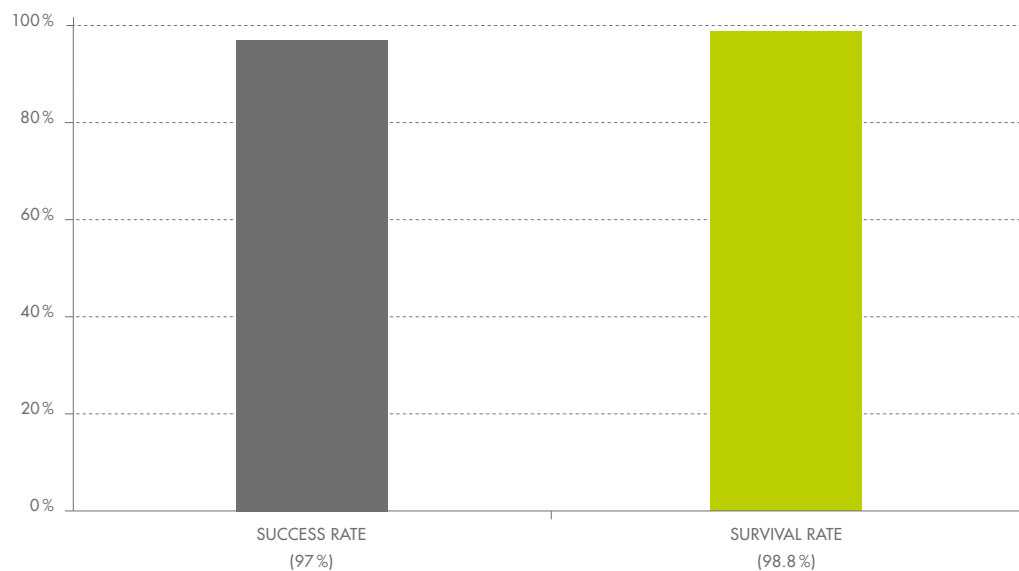
DR. KERSTIN FISCHER, FALUN, SWEDEN

10-year retrospective clinical data on the Straumann® Soft Tissue Level System of partially edentulous patients showed predictable long-term results⁴

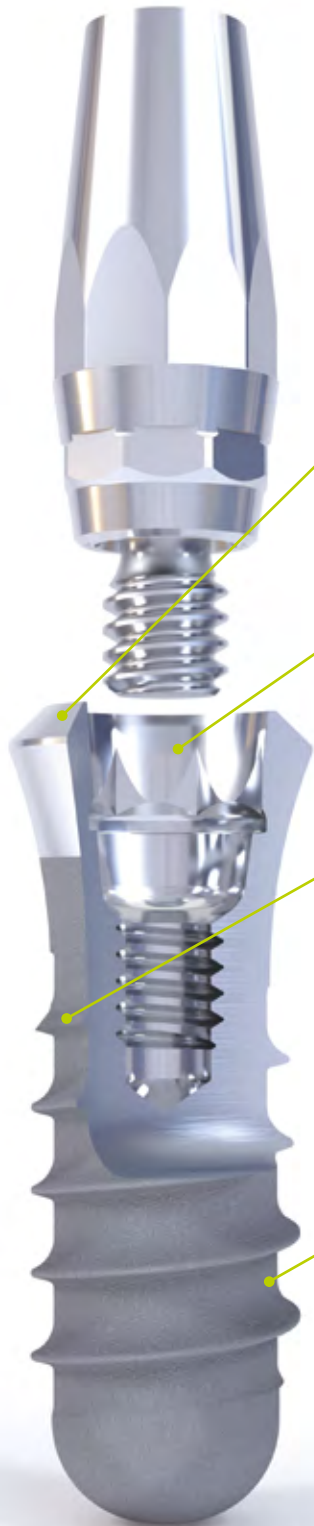
This retrospective study showed predictable 10-year survival and success rates of titanium implants with the SLA® surface in a large cohort of partially edentulous patients.

- High survival (98.8%) and success (97.0%) rates were demonstrated over 10 years.
- No implant fractures were observed.
- Low prevalence of peri-implantitis (1.8%).
- Previously published 5-year survival and success rates can be maintained over 10 years.
- In the majority of cases there was no or only minimal bone loss or bone gain respectively.

10-YEAR DATA



SUCCESS IS A RESULT OF COMMITMENT, QUALITY AND PRECISION



synOcta®, flexible and reliable

- The combination of the taper and octagon shapes features an anti-loosening mechanism and exact (re)positionability.
- Suitable for cement-retained and screw-retained restorations.
- Lean prosthetic portfolio for all indications.*

Designed for optimal preservation of the crestal bone and soft tissue stability

- 45° shoulder: Optimal load distribution and fit between implant and prosthesis to minimize the microgap.
- Smooth neck: designed to respect the biological distance.

Anti-loosening mechanism with great flexibility

- The internal octagon: Secure and flexible (re)positioning of individual abutments in the implant.
- Morse taper connection: Uniform load distribution and reliable, stable implant-to-abutment joints preventing rotation.

Innovative surfaces

- SLA®:
 - Reliable and scientifically well documented surface, with predictable long-term clinical data.^{2,3}
 - Able to cut in half the timing of provisionalization compared to the previous Straumann® TPS surface.^{5,6,7}
- SLActive®:
 - Next generation in surface technology reducing healing times down to 3–4 weeks.⁸

Well-proven & new materials

- Titanium Grade 4: A proven material in implant dentistry.
- Roxolid®: A titanium-zirconium alloy stronger than titanium^{10,11} and designed to meet the needs of dental implantologists:
 - Confidence when placing small-diameter implants.
 - Flexibility of having more treatment options.
 - Designed to increase patient acceptance of implant

* From single-tooth to edentulous solutions

STRAUMANN® SOFT TISSUE LEVEL IMPLANT SOLUTIONS

STANDARD IMPLANT – THE PIONEER IN ONE-STAGE AND TRANSGINGIVAL HEALING
 Neck section of 2.8 mm for classic single-stage procedures, where the implant is placed at soft tissue level and not covered with soft tissue during the healing phase.

STANDARD PLUS IMPLANT – THE FLEXIBLE SOLUTION
 Shorter neck section of 1.8 mm, allows flexible coronal implant placement in combination with trans- or subgingival healing. This offers the dental surgeon additional options that are particularly useful in the anterior tooth region of the maxilla, where esthetic demands are high.

TAPERED EFFECT IMPLANT – THE SPECIALIST FOR IMMEDIATE AND EARLY IMPLANTATION
 Special anatomical design, for immediate or early implantation following extraction or loss of natural teeth. With the smooth neck section of 1.8 mm, healing can occur trans- or subgingivally.

ROXOLID®/TITANIUM PORTFOLIO*	NARROW NECK CrossFit®		3.3 mm, SLA®/SLActive® NEW – STRAUMANN® NARROW NECK CrossFit® IMPLANT* The Straumann® Soft Tissue Level implant to address interdental space limitations	
	REGULAR NECK	3.3 mm/4.1 mm/4.8 mm SLA®/SLActive® 	3.3 mm/4.1 mm/4.8 mm SLA®/SLActive® 	3.3 mm/4.1 mm SLA®/SLActive®
	WIDE NECK	4.8 mm SLA®/SLActive® 	4.8 mm SLA®/SLActive® 	4.8 mm SLA®/SLActive®

*The product may not be available in all countries. Please contact your local Straumann organization for more information.

STRAUMANN® SOFT TISSUE LEVEL PROSTHETIC SOLUTIONS

Lean prosthetic portfolio for all indications*

- Number of prosthetic components kept to minimum thanks to the implant design.
- A solution for all indications* in respect of working preferences and the patient's needs.

SOLID	synOcta®					CARES® ABUTMENTS AND SCREW-RETAINED BARS & BRIDGES				ATTACHMENT SYSTEMS	
Solid Abutment	synOcta® Cementable Abutment	synOcta® Angled Abutment	synOcta® 1.5 Abutment	synOcta® Gold Abutment	CARES® Ceramic Abutment	CARES® Titanium Abutment	CARES® Screw-retained Bridge	CARES® Screw-retained Bar	LOCATOR®	Retentive Anchor	
											

"At the University of Geneva we have been using the Soft Tissue Level System since early 1989, and will continue to use it, primarily in the posterior segments of the jaws. The following features, inherent to this implant type, were decisive for our choice: Easily accessible prosthodontic interface; precision mechanics of the connection between implant and abutment ('Morse taper' configuration); possibility for both cement-retained or screw-retained restorations; high versatility assured by a complete (but nevertheless 'straightforward') range of abutments and auxiliary components."

PROF. URS BELSER, DMD, CHAIRMAN EMERITUS DEPARTMENT OF FIXED PROSTHODONTICS & PROF. JEAN-PIERRE BERNARD, DMD, CHAIRMAN DEPARTMENT OF ORAL SURGERY, SCHOOL OF DENTAL MEDICINE, UNIVERSITY OF GENEVA, SWITZERLAND

* From single-tooth to edentulous solutions

DESIGNED TO SAVE TIME AND INCREASE EFFICIENCY IN YOUR PRACTICE

Convenience for straightforward cases with the Straumann® Solid Abutment and All-In-One Set

The Straumann® Solid Abutment portfolio is designed for cementable crowns and bridges in all areas. The lean and price-efficient portfolio is the solution for straightforward cases. The Straumann® All-In-One Set adds convenience by offering all components you need for the restoration in one single package.



CARES® Abutments and Screw-retained Bars and Bridges – the customized solution for your implant restorations

Customized Straumann® CARES® Abutments are designed to offer patient-specific emergence profiles and anatomical shape. In addition, the cement gap can be ideally placed to help clearing excess cement. Straumann® CARES® Screw-retained Bars and Bridges are directly connected to the implant and provide a highly precise fit. The design is made by the dental technician, whereas Straumann mills the framework in its centralized milling center.

Solutions for edentulous cases

The simplicity and easy implant accessibility offered by the Straumann® Soft Tissue Level System are most relevant when it comes to solutions for edentulous patients. Practitioner and patient benefit from a simple placement of the prosthesis and hygiene procedures. The Straumann® Soft Tissue Level System includes an extensive prosthetic portfolio for fixed and removable overdentures, and ranges from basic to premium solutions. The LOCATOR® with its self-locating design allows patients to seat their dentures easily.



Easy and reliable impression taking

Straumann offers both a screw-retained impression system and a “snap-on” mechanism of the closed-tray impression. The “snap-on” mechanism makes the impression taking easy and reliable, as you get a clear feedback if the impression component is correctly seated. In addition, the “snap-on” mechanism offers a very cost-efficient way to work.



LASTING PERFORMANCE WITH LONG-TERM SUPPORT

Straumann® Classic: prosthetic components for implants placed after 1974

The first Straumann one-stage implant was developed and commercialized by Straumann in 1974. Millions of patients have Straumann implants in their mouths. As a global leader in implant and restorative dentistry and manufacturer of high-quality products, Straumann supplies prosthetic components for all implants placed since 1974*.

Lifetime guarantee on Straumann implants**

Only original Straumann implants and prosthetic components are designed based on Straumann's engineering specifications to fit and function together, with the benefits of a long-lasting performance and a long-term guarantee.

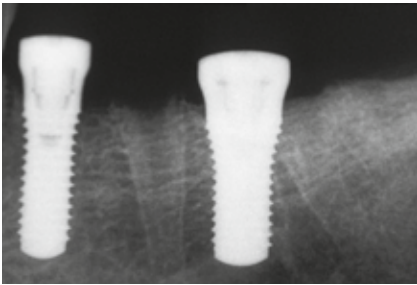
- Lifetime guarantee on Straumann implants
- 10-year guarantee on metal abutments/restorations**
- 5-year guarantee on ceramic abutments/restorations**



* See product catalog for Straumann® Classic
** See Straumann Guarantee brochure (152.360)
for terms and conditions

FIXED DENTAL PROSTHESIS USING STRAUMANN® SOFT TISSUE LEVEL IMPLANT SYSTEM

FROM A CASE REPORT BY DR. W. MARTIN AND PROF. J. RUSKIN^{1,3}



Periapical radiograph 6 weeks after implant placement

(Site 34: 4.1 x 12 mm Regular Neck Tapered Effect Implant, Site 36: 4.8 x 12 mm Wide Neck Tapered Effect Implant)



Built-in soft tissue management thanks to machined neck; lateral view 6 weeks after implant placement



Easy access at soft tissue level for impression components; impression caps and synOcta® Positioning Cylinders in place



synOcta® Abutments



Lateral view of the fixed dental prosthesis

With courtesy of Quintessence
With courtesy of Dr. W. Martin and Prof. J. Ruskin

"The Straumann® Soft Tissue Level Implant has been the implant of choice in our practice for over a decade. Its strength, predictability, versatility and ease of use have been key determinants for selecting this implant and have led to realized clinical success."

**DR. WILL MARTIN, DMD, MS – CLINICAL DIRECTOR OF THE CENTER
FOR IMPLANT DENTISTRY, UNIVERSITY OF FLORIDA, GAINESVILLE FL, USA**

REFERENCES

¹ Applicable to simple cases according to the ITI rating and using a solid abutment. ² Fischer K, Stenberg T. Prospective 10-year Cohort Study Based on a Randomized Controlled Trial (RCT) on Implant-Supported Full-Arch Maxillary Prosthesis. Part I: Sandblasted and Acid-Etched Implants and Mucosal Tissue. *Clin Implant Dent Relat Res*. 2012 Dec;14(6):808–15 ³ Fischer K, Stenberg T. Prospective 10-year cohort study based on a randomized, controlled clinical trial (RCT) on implant-supported full-arch maxillary prostheses. Part II: Prosthetic outcomes and maintenance. *Clin Implant Dent Relat Res*. 2013 Aug;15(4):498–508 ⁴ Buser D, Janner SF, Wittneben JG, Brägger U, Ramseier CA, Salvi GE. 10-year survival and success rates of 511 titanium implants with a sandblasted and acid-etched surface: a retrospective study in 303 partially edentulous patients. *Clin Implant Dent Relat Res* 2012;14(6):839–851. ⁵ Cochran DL, Buser D, Ten Bruggenkate CM, Weingart D, Taylor TM, Bernard JP, Peters F, Simpson JP. The use of reduced healing times on ITI implants with a sandblasted and acid-etched (SLA) surface: early results from clinical trials on SLA® implants. *Clin Oral Implants Res* 2002;13(2):144–153. ⁶ Rocuzzo M, Wilson T. A prospective study evaluating a protocol for 6 weeks' loading of SLA implants in the posterior maxilla: one year results. *Clin Oral Implants Res* 2002;13(5):502–507. ⁷ Salvi GE, Gallini G, Lang NP. Early loading (2 or 6 weeks) of sandblasted and acid-etched (SLA) ITI implants in the posterior mandible. A 1-year randomized controlled clinical trial. *Clin Oral Implants Res* 2004;15(2):142–49. ⁸ Oates TV, Valderrama P, Bischof M, Nedir R, Jones A, Simpson J, Toutenburg H, Cochran DL. Enhanced implant stability with a chemically modified SLA® Surface: a randomized pilot study. *Int. J. Oral Maxillofac. Implants*. 2007;22(5):755–760. ⁹ Albrektsson T. et al. The long-term efficacy of currently used dental implants: a review and proposed criteria of success. *Int J Oral Maxillofac Implants* 1986; 1:11–25 ¹⁰ Norm ASTM F67 (states min. tensile strength of annealed titanium) and data on file ¹¹ Titanium cold worked TiGr4 and Roxolid tensile strength: Data on file ¹² Hermann JS, Buser D, Schenk RK, Schoolfield JD, Cochran DL. Biologic Width around Titanium Implants. A Physiologically Formed and Stable Dimension over Time. *Clinical Oral Implants Research* 2000; 11:1–11 ¹³ ITI Treatment Guide Volume 2, 35–41.



International Headquarters

Institut Straumann AG
Peter Merian-Weg 12
CH-4002 Basel, Switzerland
Phone +41 (0)61 965 11 11
Fax +41 (0)61 965 11 01

www.straumann.com

LOCATOR® is a registered trademark of Zest Anchors, Inc., USA.

© Institut Straumann AG, 2013. All rights reserved. Straumann® and/or other trademarks and logos from Straumann® mentioned herein are the trademarks or registered trademarks of Straumann Holding AG and/or its affiliates. All rights reserved.