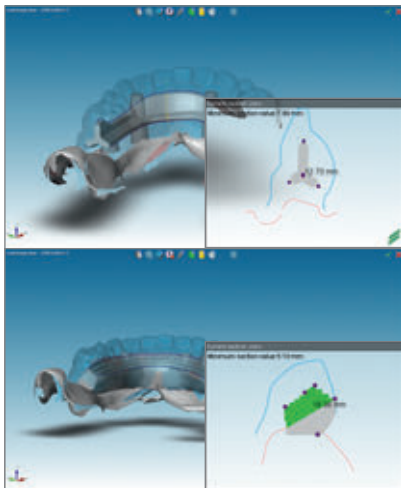


Basic Information on CARES® Basic and Advanced Fixed Bars Prosthetic Finalization



This step-by-step instruction is a handling guideline for the CARES® Basic and Advanced Fixed Bars. The following steps are considered a prerequisite:

- The prosthetic planning has been completed and aligned between all members of the treatment team
- A wax try-in of the prosthesis has been verified in the patient's mouth
- Straumann implants have been implanted
- The accuracy of the master models has been counter-checked with a verification jig, to ensure accurate representation of the patient's oral situation



Step 1

Design in CARES® Visual

To have an ideal adaptation of the CARES® Fixed Bars to the final prosthesis it is recommended to scan the wax try-in as an overlay (see picture on the left).

CARES® Advanced Fixed Bar: Determine the acrylic/metal finishing line according to the wax try-in.

For more details on designing the CARES® Basic and Advanced Fixed Bar please consult the CARES® Visual guidelines in the software.



Step 2

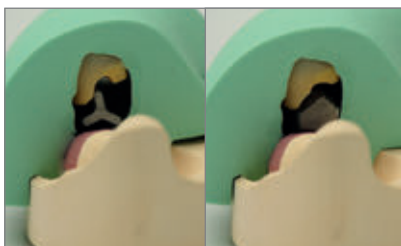
Fit check

After receiving the CARES® Fixed Bar check the fit on the master cast.

Step 2a

Optional:

To further check the fit, send the bar to the dentist for an additional appointment for a try-in in the patient's mouth. To ensure the screws used are not damaged please insert the screws with the SCS Screwdriver. The friction fit secures the screws to the instrument during insertion and ensures safe handling.



Step 3

Flask the verified wax try-in

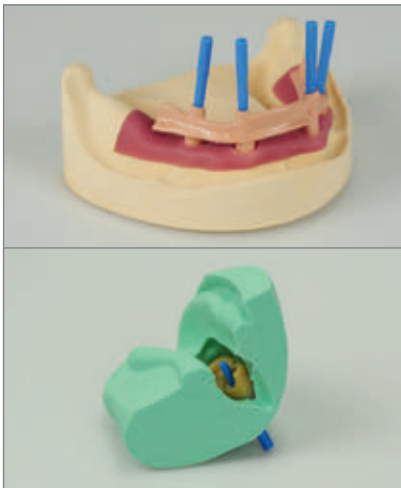
- Place the verified wax try-in on the master cast and flask it.
- Remove the flask and boil out the wax.
- Attach the bar to the master cast and ensure that the teeth in the flask don't interfere with the bar.



Step 4

Bar preparation

Apply opaque on the area where the acrylic will be applied according to the veneering system of choice.



Step 5

Close the screw channels of the bar during the acrylic adaptation phase. For example, use a Q-tip with the cotton applicator removed to close the screw channels of the bar. Insert the shaft of the Q-tip long enough for it to block out the screw channel when applying the acrylics.



Step 6

Finalizing the prosthetic restoration

Process and finish the prosthesis according to conventional dental techniques.



Step 7

Insertion in patient's mouth

- Check the fit of the bar before fixing it in the patient's mouth; if the implant-interface is subgingival, take a radiograph to verify the fit.
- Do not attach the bar if the fit appears to be unsatisfactory.
- Always use new abutment/occlusal screws for patient use.
- Torque implant level SRBB*: 35 Ncm
- Torque screw-retained abutment: 35 Ncm
- Torque occlusal screw for abutment-level SRBB*: 15 Ncm

International Headquarters

Institut Straumann AG

Peter Merian-Weg 12

CH-4002 Basel, Switzerland

Phone +41 (0)61 965 11 11

Fax +41 (0)61 965 11 01

www.straumann.com

© Institut Straumann AG, 2014. All rights reserved.

Straumann® and/or other trademarks and logos from Straumann® mentioned herein are the trademarks or registered trademarks of Straumann Holding AG and/or its affiliates.