

# Straumann® CARES® Screw-retained Bridges and Bars Service and Process\*



\* APAC

60 YEARS

 **straumann**  
simply doing more



# Introduction

Straumann offers you a customer service concept to obtain our customized Straumann® CARES® Screw-retained Bridges and Bars (SRBB). CARES® SRBB are manufactured according to your CAD design and they are carefully quality checked on the master model by our highly trained professionals. By sending the master model to Straumann, you profit from a professional procedure that is part of our commitment to provide you with excellent quality and fit of the products.

## **This service offers you**

- 100% inspection, every single CARES® SRBB is checked for quality and fit
- An interactive collaboration with Straumann
- Guaranteed high quality of Straumann products

## **Characteristics of Straumann® CARES® Screw-retained Bridges and Bars**

- Original Straumann connection to the implant and screw-retained abutment
- Straumann precision fit between implant and abutment
- Full control over the design of the CARES® SRBB
- Available on abutment and implant level

# Process

## 1. Customer

- Prepare the master model according to the description in this brochure.
- Scan the master model.
- Design your CARES® SRBB according to your needs and submit your order electronically to Straumann.

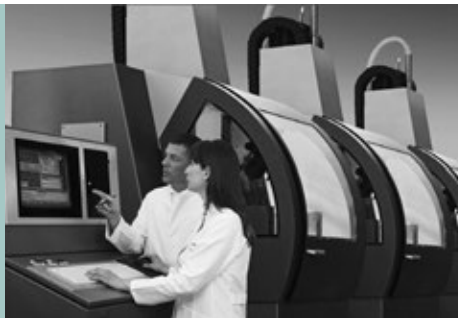


- Fill out the Manufacturing Form.
- Pack the master model according to the instructions in this brochure.
- Send the model to Straumann.



## 2. Straumann

Your CARES® SRBB is manufactured according to your design. An experienced Straumann technician will perform a fit check and quality control on every CARES® SRBB.



## 3. Delivery

The CARES® SRBB and the model are delivered to you for fabrication of the final restoration.





# Preparation of the master model

## Please prepare a master model with

- new and genuine Straumann® implant/abutment analogs that do not move in the model.  
→ Damaged, moving and copycat analogs will result in poor fit of your CARES® SRBB.
- a removable, stable silicone soft tissue mask.  
→ This is necessary to enable Straumann to conduct the quality control.
- the project number for identification.

## Case dependent

- Screw-retained abutments torqued with 35 Ncm  
→ In case of the need to align a common insertion axis and subsequently place screw-retained abutments

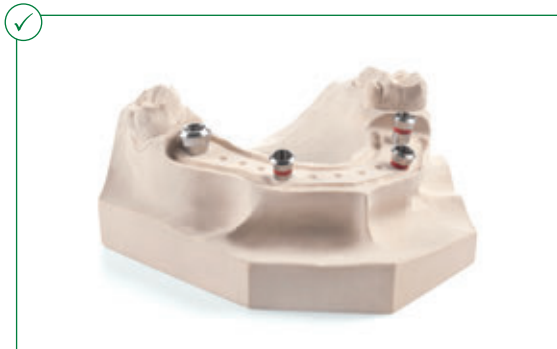
## Important note for CARES® SRBB on Straumann® Screw-retained Abutments

Please keep in mind that CARES® SRBB are milled based on their master cast. Therefore, a precise replication of the oral situation is essential for a good fitting of the CARES® SRBBs.

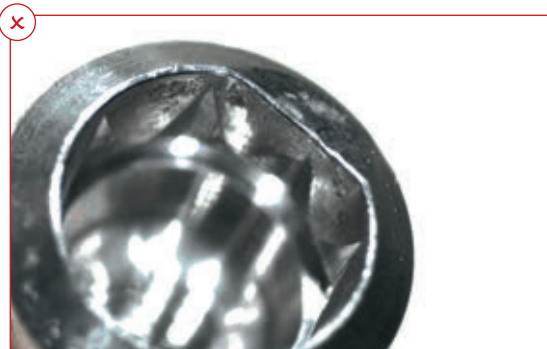
For abutment-level CARES® SRBB, the master cast represents the oral situation. Therefore, it is necessary to use a master model with abutment analogs, created from an oral abutment-level impression of the final abutments, and torqued with 35 Ncm.

Master models with subsequently hand-tightened (< 35 Ncm) abutments may not accurately represent the oral situation and therefore could lead to a poor fitting restoration with height and alignment deviations, although it will fit the model. Therefore, when it is required to place abutments subsequently on the master model, only a torque of 35 Ncm will represent the final oral situation adequately. The subsequently placed abutment should be rotated so that it fits against one end of the implant/abutment interface's play and the dentist must be informed that the abutment has to be rotated in the same direction during oral placement.

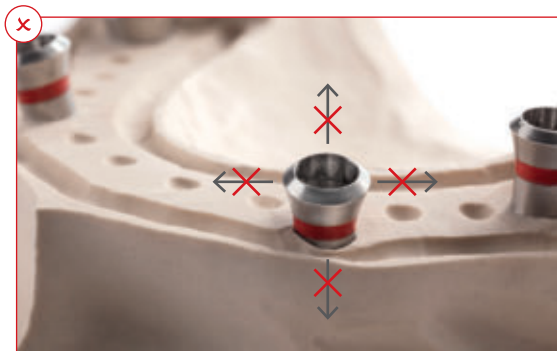
If a SRBB on subsequently placed Screw-retained Abutments is ordered, the stone model with the torqued abutments is required for production.



Always use NEW, genuine Straumann® implant/abutment analogs



Do not use damaged or scratched implant/abutment analogs!



No moving implant/abutment analogs



Removable soft tissue mask

If the model is not prepared appropriately, Straumann reserves the right to decline your order and will return the model to you at your cost (i.e. you will be invoiced for the return shipping of this model).


**Note**

- Please ensure that you have cleaned and disinfected all materials before sending the model to Straumann.
- Always use new abutment screws/occlusal screws for patient use!

# Manufacturing form

Complete the Manufacturing Form with the required data.

Please ensure that you provide us with the appropriate project number(s).

  
**STRAUMANN® CARES®**  
**SCREW-RETAINED BRIDGES**  
**AND BARS**  
MANUFACTURING FORM

License/project number	<u>30017CH</u>	<u>10001</u>
Name of contact person	<u>John Smith</u>	
Phone number	+ <u>11</u> / <u>22</u> / <u>333 33 33</u>	
E-mail	<u>j.smith@dental-lab.com</u>	
Date	<u>Nov 15, 2013</u>	
Address	<u>Dental Lab</u> <u>Johnstreet 1</u> <u>CH-4055 Basel</u>	

Help us streamline the manufacturing process. Please select.

If the device conflicts with the stone model in the gingival area...

...a dental technician from Straumann may grind the conflicting area on the stone model in order to inspect the fit of the device. Only applies if necessary!

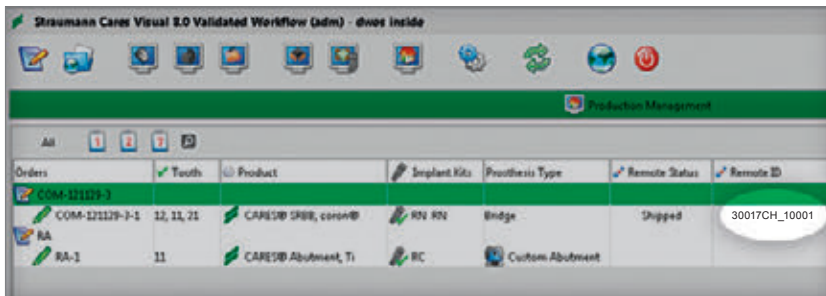
or

...please do not grind the stone model.  
I accept that the fit of the device therefore cannot be inspected by a dental technician from Straumann and that the device will not be CE-marked.

COMMITTED TO  
**SIMPLY DOING MORE**  
FOR DENTAL PROFESSIONALS



## How to find the project number in CARES® 8.0 and higher



In CARES® 8.0 and higher versions, you can find the project number in the Production Management window under Remote ID after the order has been placed.

## How to find the project number in CARES® 6.2



In CARES® 6.2, you can find the project number in the summary when routing the order.

# Packaging of the model

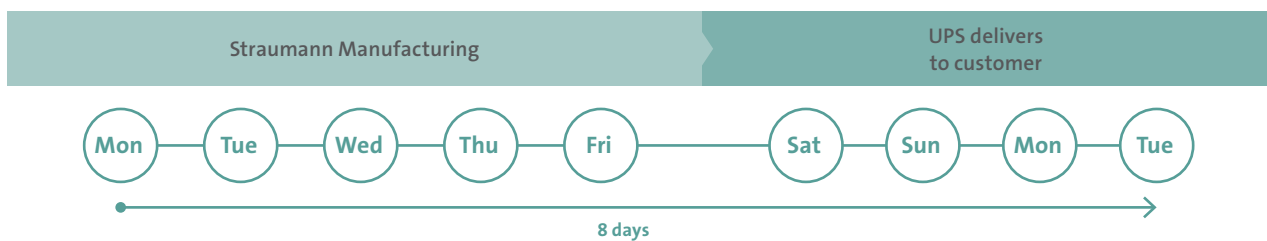


Every model needs its own manufacturing form. For safe overseas shipping, assure that you wrap the model box securely in a box. Send the box to:

**Straumann CAD/CAM GmbH**  
z. Hd. TMC  
Lochamer Schlag 6  
82166 Gräfelfing  
GERMANY

# Turnaround time

In urban centers the turnaround time for CARES® SRBB is 8 days\* after receipt of the master model.





### **International Headquarters**

Institut Straumann AG

Peter Merian-Weg 12

CH-4002 Basel, Switzerland

Phone +41 (0)61 965 11 11

Fax +41 (0)61 965 11 01

[www.straumann.com](http://www.straumann.com)

© Institut Straumann AG, 2014. All rights reserved.

Straumann® and/or other trademarks and logos from Straumann® mentioned herein are the trademarks or registered trademarks of Straumann Holding AG and/or its affiliates.